



Interactive ACs.
Designed smart to
make you lazy.



Printed in October 2016



www.traneindia.com

Disclaimer: The features mentioned are subject to continuous upgrade and can change any time.

Disclaimer: Trane received the highest numerical score in United States in the proprietary Lifestory Research 2016 America's Most Trusted™ Heating, Ventilation, & Air Conditioning (HVAC) System study. Study based on 17,878 surveys among residential consumers. Proprietary study results are based on experiences and perceptions of consumers surveyed between January and December 2015. For details see www.lifestoryresearch.com.

Ingersoll Rand (NYSE:IR) advances the quality of life by creating comfortable, sustainable and efficient environments. Our people and our family of brands—including Club Car®, Ingersoll Rand®, Thermo King® and Trane®—work together to enhance the quality and comfort of air in homes and buildings; transport and protect food and perishables; and increase industrial productivity and efficiency. We are a \$13 billion global business committed to a world of sustainable progress and enduring results. For more information, visit www.ingersollrand.com.



Leading through innovation

We are Trane, global leaders in heating, ventilation and air conditioning (HVAC) systems. Our business is to create innovation that provides comfort in homes and some of the world's largest and most famous buildings. Trane was established in 1913 by James Trane. The dedication and vision of one man has taken Trane from being a small plumbing company to becoming an industry defining giant in 100 years. With its legacy of 100 years, Trane has constantly delivered innovative systems for the HVAC category, many of which have redefined the industry. We are a part of the \$13 billion Ingersoll Rand, a diversified manufacturing and services organization. Trane has 104 manufacturing locations across 28 countries. We are a company driven by passion for technological innovations. Our 1500 patents are a testimony to that, When it comes to heating and cooling America's homes, people see Trane as the industry expert. It is hence one of the highly preferred brand in the US residential HVAC category. Our legacy of trust and innovation is what we bring to Indian homes. We are introducing revolutionary and technologically evolved products that promise a new level of comfort, convenience & control.

A landmark in comfort

We custom design solutions for some of the most well known of the buildings world. So if you are visiting the Statue of Liberty in New York, The Kremlin in Moscow, the Petronas Tower in Kuala Lumpur, the International Airport in Bangkok, the Burj Khalifa in Dubai or the Akshardham Temple in Delhi, you'll find Trane air conditioning keeping systems you comfortable inside them.

For these world famous monuments, choosing a heating and cooling system is a very important decision, just as it is for your home. Our 100 years of expertise has made our products more reliable, durable and energy efficient, and that is why such landmark buildings choose Trane.



The Kremlin President Residence - Russia



Petronas Towers - Kuala Lumpur



Burj Khalifa - Dubai



Akshardham Temple - New Delhi

Trane Interactive ACs

History has witnessed great inventions and momentous breakthroughs. It has witnessed eureka moments of some truly brilliant minds. Minds that recognized one basic truth. That all of us are torn between being smart and being lazy and we are best when we can be both. It's in their proud tradition that we launch ACs and door locks powered by Trane Interactive Technology. These products are so smart they'll help you sit back. Because, when you think smart, you live lazy.

Be smart, be lazy.™



Interactive Remote



Interactive Air Conditioner

Comfort, convenience and control at your fingertips

Trane Interactive technology gives you a whole new level of comfort and convenience with the launch of premium air conditioning and security solutions. These products are smartly designed to make your everyday living simple, give you total control and let you be lazy.

Trane Interactive Air Conditioners

Choose smart amongst a wide range of Trane Interactive Air Conditioners.



Trane Interactive Inverter AC
IN2 series (1/1.5/2)
R410



Trane Interactive Split AC
HW4 Series (1/1.5/2)
R410



Trane Interactive Concealed AC
CN1 Series (1.5/2/3/4)
R410

Trane Interactive Remote

Ergonomically superior design and minimalistic layout to put ease in the palm of your hand.

- Clean look and intuitive to use
- Real time display of outside temperature
- Backlit button for clear visibility at night
- Large screen for better display





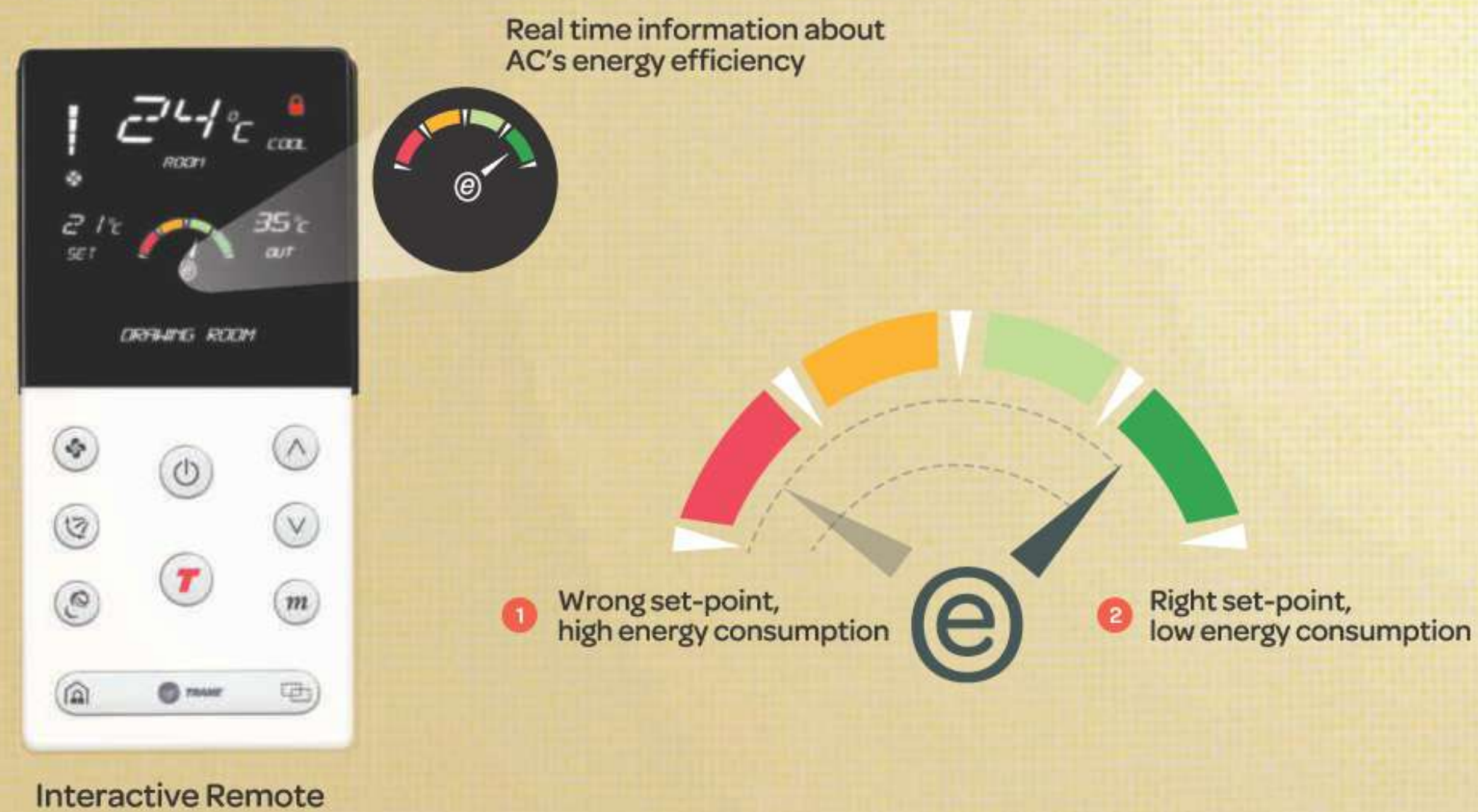
Efficiency Meter

Save energy as you stay cool.

Most air conditioners link energy efficiency only with higher star ratings, however it also depends on how the consumers are using the AC. When the set temperature is lower than ambient temperature the AC consumes higher energy. The efficiency meter on Trane Interactive Remote provides visual aid to set the right temperature and optimize energy consumption.

- Efficiency Meter gives real time information about the AC's energy consumption
- It helps you choose the right set point for lowest energy consumption no matter what the AC's star rating

Experience the Efficiency Meter in Trane Interactive ACs.

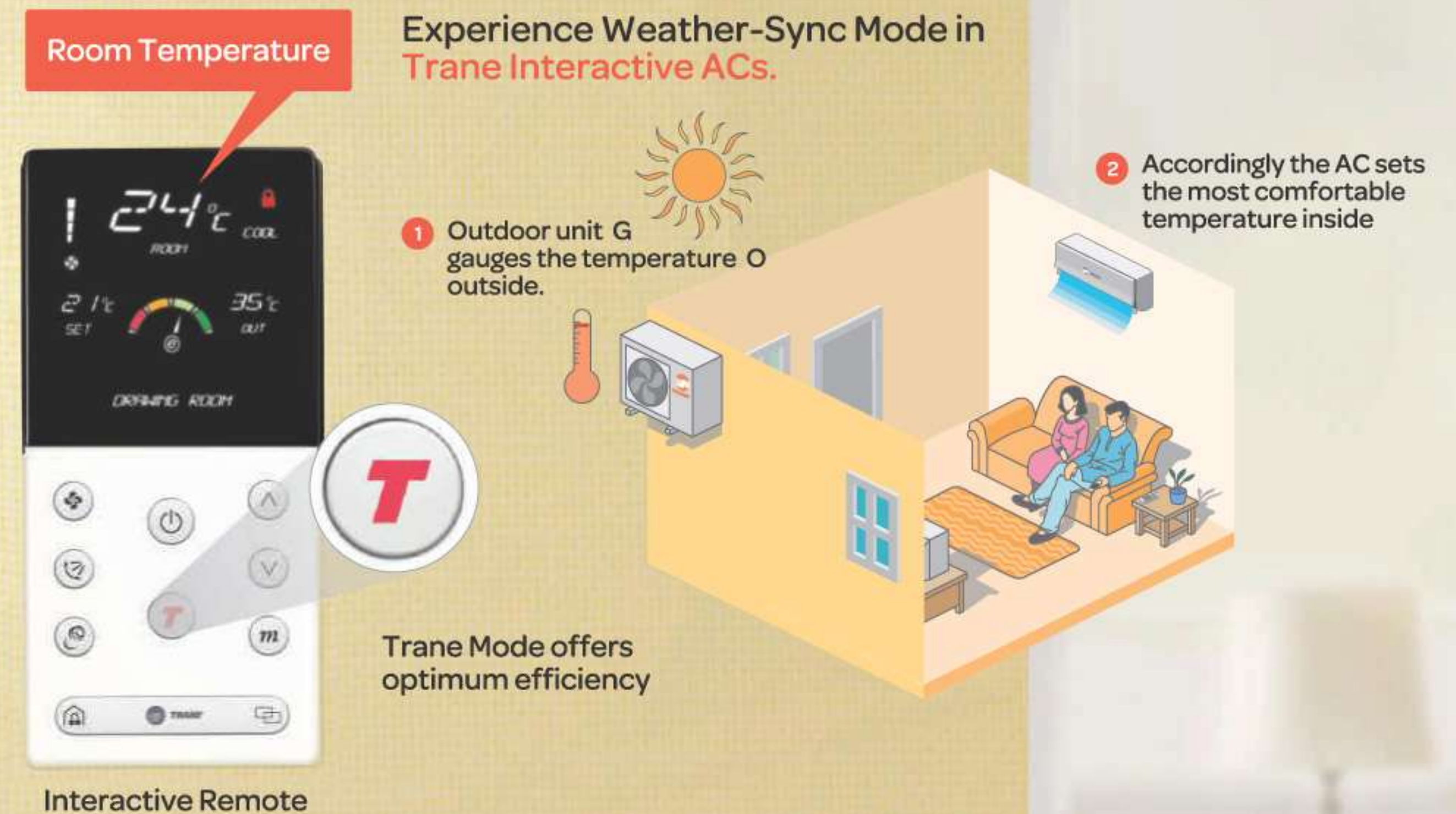


Trane Weather-Sync Mode

Cools according to the weather.

Put an end to frequently changing the room temperature as per outside weather. Weather-Sync mode senses any change in the weather and adjusts the temperature inside to give you optimum energy efficiency and comfort

- The Weather-Sync Mode synchronizes the operations of the AC with the weather outside to give you optimum cooling inside
- This also protects you from thermal shock by helping avoid the risk of catching cold when you walk into a chilled room from the heat outside





Multi-Room Control

Control upto 18 ACs from anywhere.

Forget about running between rooms to switch off your ACs. Whether your kids have left the AC on in their room before coming to dinner or you want to adjust the temperature for your parents in the study, you'll do it with the push of a button from anywhere in the house.

- Control upto 18 Interactive ACs in your home without getting up from one place.
- You can switch on/off, change temperature or fan speed of any Trane AC in any room of your home.



Experience Multi-Room Control in Trane Interactive ACs.



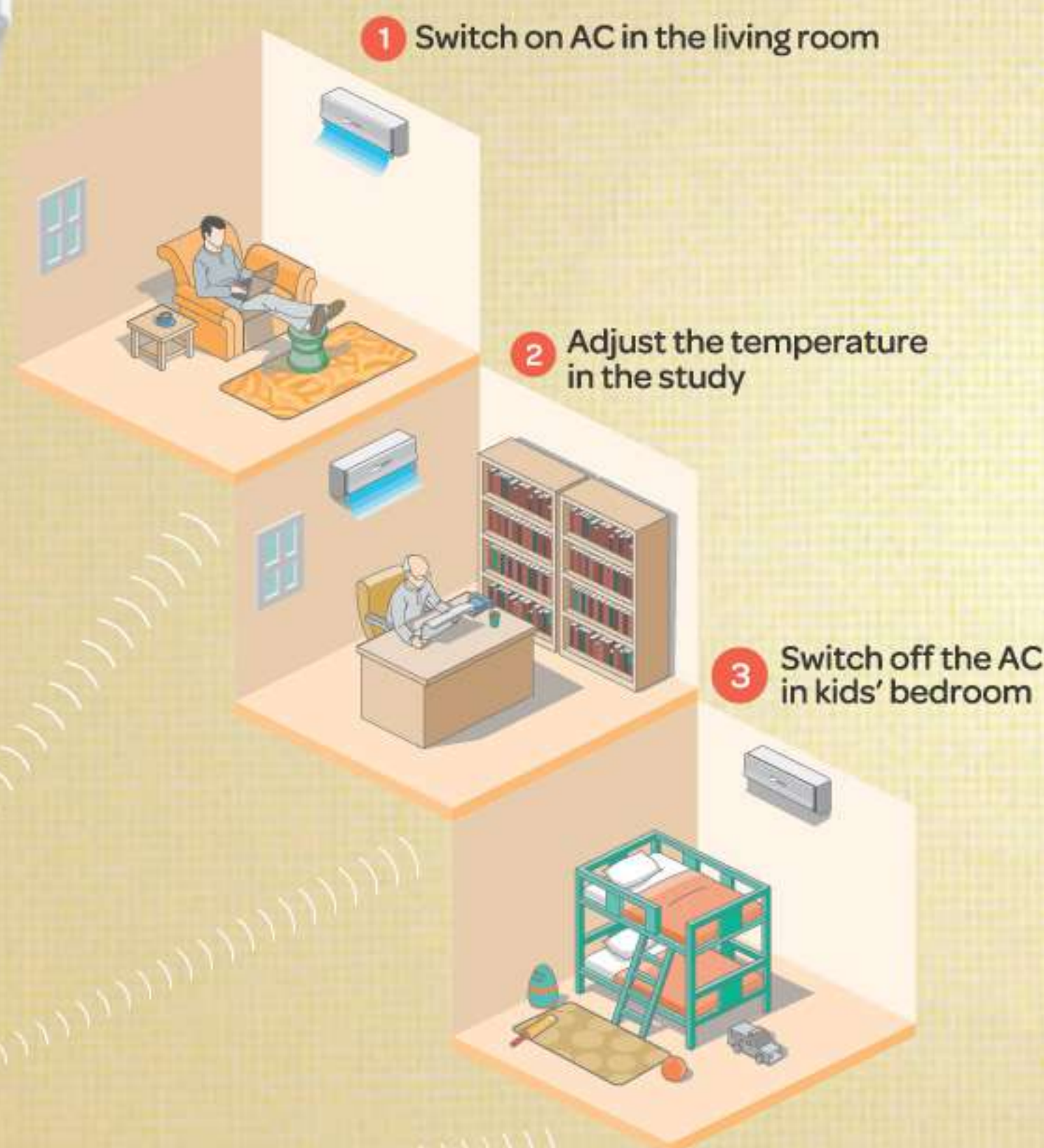
Select from the pre-programmed list of 18 rooms

- DRAWING ROOM
- STUDY ROOM
- KIDS ROOM
- BED ROOM

Multi-room control mode

Interactive remote

Control all your Interactive ACs from anywhere



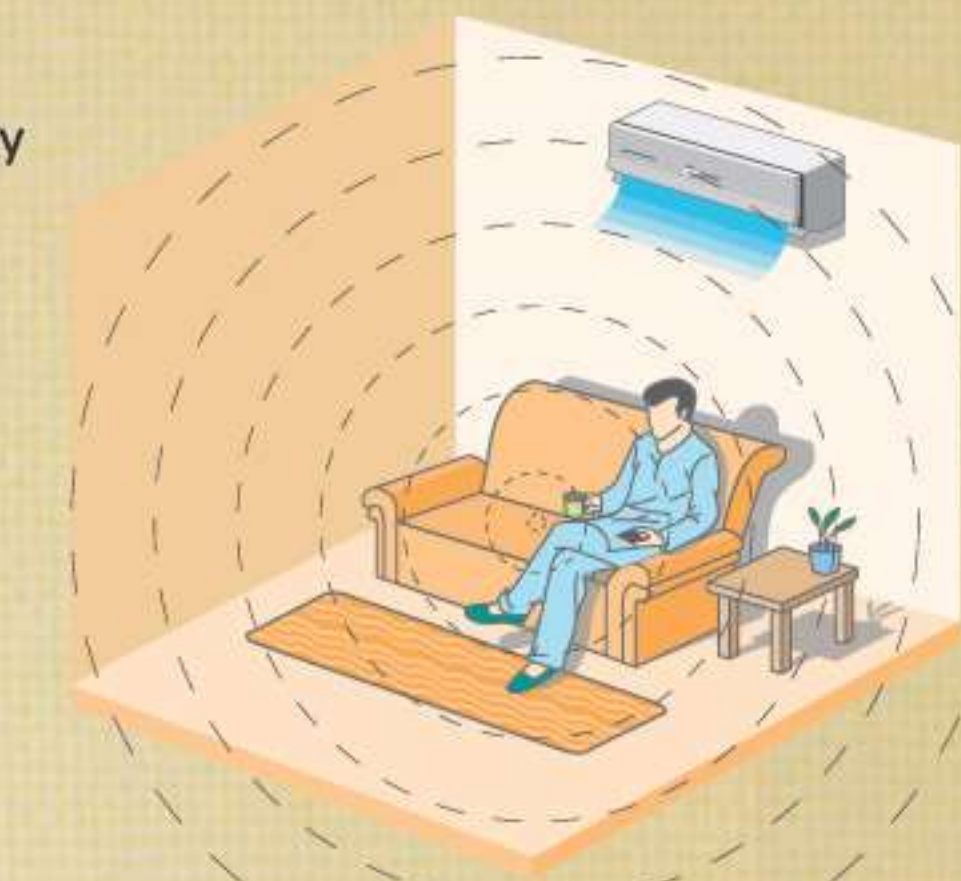
No Pointing

Control your AC without pointing at it.

You no longer have to shift your position to aim the remote at your AC. Control your Trane Interactive AC from any corner of your home without ever having to move a bit.

- Trane Interactive Remote works on Trane Interactive Technology that does not need line-of-sight to operate and lets you control the AC from anywhere
- It has reach in all directions, around bends, and can even penetrate walls

Remote signal powered by Trane Interactive Technology



Allows you to control Trane Interactive ACs without having to be in the vicinity



Service Alerts

Your Personal Service Manager

When the AC stops working suddenly and displays an error code, you search for it in the manuals or call the technical guy. With Trane Interactive Remote, no more scratching your head over error codes.

- The Trane Interactive Remote displays easy to understand service alerts
- The service alerts give you clear, crisp and actionable messages
- No need to depend on a manual or technical person to figure what's wrong with your AC



FILTER CHOKE - CLEAN THE FILTER



INPUT POWER FAILURE



LOW BATTERY - CHANGE THE BATTERY

Easily comprehensible Service Alerts

Efficiency by Design

Cu All-copper components Guarantees long life of your AC

- The Trane Interactive AC uses high reliability Copper Tube Condenser, Evaporator & Interconnecting Pipes for longer life & better performance

Gold Condenser Resists damage and corrosion

- To give extra long life, the outdoor unit undergoes a special protective treatment called Gold Fin[®].

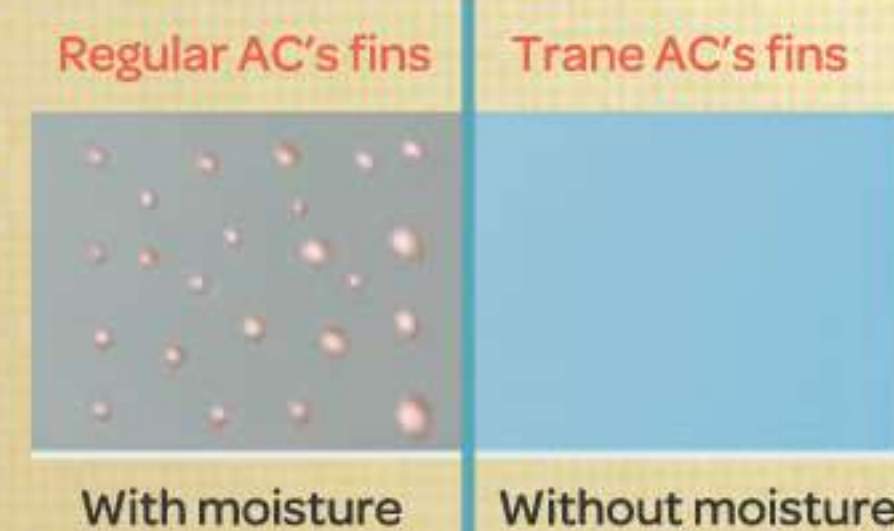
Trapeziform copper pipes Enables efficient cooling

- The Trane Interactive AC is designed using Trapeziform Inner Grooved Copper Pipes which have a greater surface area compared to traditional copper piping & allow more refrigerant to pass through it
- This results in better heat exchange, and also helps in more efficient removal of heat from the room



Hydrophobic fins Prevents settling of water on fins which may lead to foul smell

- In the Trane Interactive AC, evaporator fins are coated with a water resistant layer that prevents droplets from sticking to the surface area of the fins, thus keeping them dry.
- It leads to better air flow, less gas leakage, and better life of coil due to reduced corrosion



Turbo mode Better air-throw and faster cooling

- With the Turbo Mode, Trane Interactive ACs give you long air-throw of 20 feet* which enables cooling even in the farthest corner
- It also enables quick cooling. It brings down room temp to comfortable 26 deg C within 3 minutes*

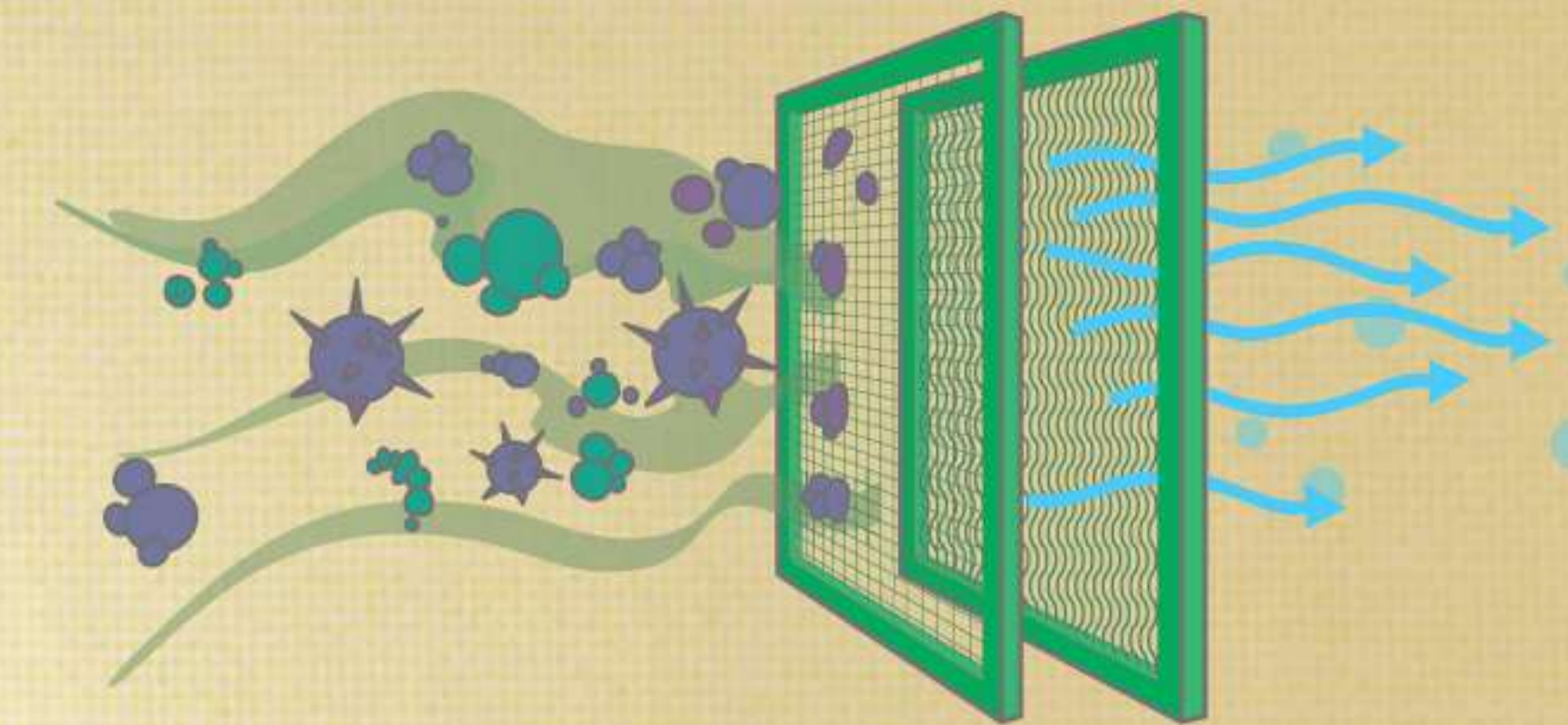


Turbo Mode gives you long air-throw of 20 feet

Comfort and Health without compromise

Purity filters Lysozyme filter - Lets in only pure air

- This is unique lysozyme filter which can effectively remove more than 99% of the pneumonia grams of Klebsiella, Pseudomonas Aeruginosa, Escherichia coli and Staphylococcus Aureus. So basically what it gives is pure air for you and your loved ones.



52 Deg. Tested Machines

- Energy-efficient, recognized brand compressor, which uses a Permanent Magnet (PM) motor offering greater operating efficiency.

Auto Cleaning Coil No corrosion, no leakage

- The Trane Interactive AC cleans its coil automatically
- You need not enable or disable the feature. It automatically dries the indoor unit after the AC is switched off, which guarantees –
 - No smell generation due to water blocking
 - No gas leakage due to corrosion of copper

Ultra silent Experience the silence of a Library

- Designed using advance aerodynamic techniques to cut down on the AC noise so that there is little to no noise disturbance

* Under test conditions
*Applicable to 5 Star models only.

Interactive Smart AC - **WebApp**

Control Your Trane Interactive AC through Internet !



Aesthetically Compact Design

The USB powered 9 cm x 9 cm device is designed to be small, light and attractive in design.



Master Control

Log in using a master password that can control all the ACs connected to the Gateway with the click of one button.



Web Gateway



Weekly Scheduler

Now schedule your AC when and how much it needs to work and when not!



Control upto 18 Trane ACs

You can name and control 18 ACs from your App and optimize their performance by Energymeter



Track Performance of your AC

Track power consumption patterns of your AC on a daily, weekly, monthly basis to improve efficient energy usage, and generate AC specific reports."



High Security

With password protection for Individual Interactive AC, communications via all interfaces are encrypted with industrial standards to protect it from network threats and ensure data security.

Year Round comfort with Trane Hot & Cold Inverter Air Conditioner.



IN3 Series (1/1.5/2)



Hot & Cold AC

Enjoy comfortable temperature across the year in all seasons



Variable Speed Compressor

Quick & efficient performance as per requirement



R410A

Green environment - friendly and efficient refrigerant

Uniform cooling for increased comfort with Trane's Cassette AC.



360 degree airflow

Uniform & efficient cooling



In build drain pump

Lifts condensate water for easy drainage.



3 Dimensional screw fan

Less resistance, increased air volume, better heat exchange



R410A

Green environment - friendly and efficient refrigerant



High Airflow

Experience one of the industry-best CFM



KS1 Series (1.5/2/3/4)

R410 Range
Series: HW4
 (Interactive Split Type AC)



| Specification | Description | Model | TSY12GW3 | TSY18GW3 | TSY22GW3 | TSY12GW5 | TSY18GW5 |
|---------------------------------|------------------------------|----------------|-------------------------|-------------------------|-------------------------|-------------------------|-------------------------|
| Capacity | Star Rating | | 3 | 3 | 3 | 5 | 5 |
| | Cooling | Watts | 3,500 | 5,100 | 6,600 | 3,500 | 5,100 |
| | Cooling | BTU/Hr | 11,946 | 17,406 | 22,526 | 11,946 | 17,406 |
| | Compressor/ Refrigerant | Type | Rotary/ R410 | Rotary/ R410 | Rotary/ R410 | Rotary/ R410 | Rotary/ R410 |
| Elec. Rating | Power Supply | Volt/Phase/Hz. | 220-240V~ 50Hz, 1Ph | 220-240V~ 50Hz, 1Ph | 220-240V~ 50Hz, 1Ph | 220-240V~ 50Hz, 1Ph | 220-240V~ 50Hz, 1Ph |
| | Power Input | Watts | 1120 | 1620 | 2120 | 980 | 1450 |
| | Running Current | Amps | 5.0 | 7.0 | 9.4 | 4.3 | 6.3 |
| Performance | EER/ COP | W / W | 3.13 | 3.15 | 3.11 | 3.57 | 3.52 |
| | Indoor air flow | CMH | 700/ 550/ 450/ 350 | 900/ 750/ 600/ 450 | 1050/ 900/ 750/ 600 | 800/ 650/ 500/ 350 | 900/ 750/ 600/ 450 |
| | Indoor Noise (Lo) | dB | 30 | 40 | 40 | 35 | 40 |
| Features | Air Swing | | Auto + 3 Selectable | Auto + 3 Selectable | Auto + 3 Selectable | Auto + 3 Selectable | Auto + 3 Selectable |
| | Speed Setting | | 4 Level | 4 Level | 4 Level | 4 Level | 4 Level |
| | Display Type | | LED | LED | LED | LED | LED |
| | Memory Backup | | Yes | Yes | Yes | Yes | Yes |
| | Sleep mode | | Yes | Yes | Yes | Yes | Yes |
| | Dry Mode | | Yes | Yes | Yes | Yes | Yes |
| | Weather Sync Mode | | Yes | Yes | Yes | Yes | Yes |
| | Turbo Mode | | Yes | Yes | Yes | Yes | Yes |
| Interactive Controller Features | Display Type | | 2.5" Color LED | 2.5" Color LED | 2.5" Color LED | 2.5" Color LED | 2.5" Color LED |
| | Remote Pointing | | Any Direction/ Any Room | Any Direction/ Any Room | Any Direction/ Any Room | Any Direction/ Any Room | Any Direction/ Any Room |
| | Back Lit Buttons | | Yes | Yes | Yes | Yes | Yes |
| | Room Temp Display | | Always | Always | Always | Always | Always |
| | Set Temp Display | | Always | Always | Always | Always | Always |
| | Outdoor Temp Display | | Always | Always | Always | Always | Always |
| | Real Time Energy Consumption | | Efficiency Meter | Efficiency Meter | Efficiency Meter | Efficiency Meter | Efficiency Meter |
| | Multi Room AC Control | | Upto 18 Trane ACs | Upto 18 Trane ACs | Upto 18 Trane ACs | Upto 18 Trane ACs | Upto 18 Trane ACs |
| Filters | Bacteria/ Dust Filter | | Yes | Yes | Yes | Yes | Yes |
| | Health Filter (Lysozyme) | | Yes | Yes | Yes | Yes | Yes |
| Weight & Dimensions | IDU Size (Net) | (WxHxD) mm | 850x270x208 | 900x292x215 | 1080x302x220 | 900x292x215 | 900x292x215 |
| | ODU Size (Net) | (WxHxD) mm | 812x256x540 | 850x295x605 | 870x310x700 | 812x256x540 | 870x310x700 |
| | IDU Weight (Net / Gross) | Kg | 11/ 13 | 12/ 14 | 16/ 20 | 13/ 15 | 14/ 17 |
| | ODU Weight (Net / Gross) | Kg | 34/ 38 | 40/ 45 | 53/ 60 | 32/ 36 | 48/ 51 |
| | Liquid Pipe | mm(inch) | φ 6.0 (1/4") | φ 6.0 (1/4") | φ 9.52 (3/8") | φ 6.0 (1/4") | 6.0 (1/4") |
| Gas Pipe | mm(inch) | φ 9.52 (3/8") | φ 12.0 (1/2") | φ 15.88 (5/8") | φ 9.52 (3/8") | 12.0 (1/2") | |

R410 Range
Series: CN1
 (Interactive Concealed Type AC)



| Specification | Description | Model | TCL48CCT | TCL36CCT | TCY24CC | TCY18CC |
|------------------------------|--------------------------------------|----------------|-------------------------|-------------------------|-------------------------|-------------------------|
| Capacity | Cooling | Watts | 14,068 | 11,137 | 7,034 | 5,275 |
| | Cooling | BTU/Hr | 48,000 | 38,000 | 24,000 | 18,000 |
| | Compressor/ Refrigerant | Type | Scroll/ R410 | Scroll/ R410 | Rotary/ R410 | Rotary/ R410 |
| Elec. Rating | Power Supply | Volt/Phase/Hz. | 380-415V/ 50Hz/ 3Ph | 380-415V/ 50Hz/ 3Ph | 220-240V/ 50Hz/ 1Ph | 220-240V/ 50Hz/ 1Ph |
| | Power Input | Watts | 4900 | 3890 | 2490 | 1870 |
| | Running Current | Amps | 8.5 | 7.9 | 11.4 | 8.6 |
| Performance | EER/ COP | W / W | 2.87 | 2.86 | 2.82 | 2.82 |
| | Indoor air flow (Turbo/ Hi/ Mi/ Lo) | CMH | 3010/ 2940/ 2410/ 1940 | 2270/ 2200/ 1890/ 1650 | 1400/ 1320/ 1100/ 1000 | 1170/ 1100/ 770/ 650 |
| | Indoor Noise | dB | 36 | 36 | 33 | 33 |
| Features | Speed Setting | | 4 Level | 4 Level | 4 Level | 4 Level |
| | Display Type | | LED | LED | LED | LED |
| | Memory Backup | | Yes | Yes | Yes | Yes |
| | Sleep mode | | Yes | Yes | Yes | Yes |
| | Dry Mode | | Yes | Yes | Yes | Yes |
| | Weather Sync Mode | | Yes | Yes | Yes | Yes |
| | Turbo Mode | | Yes | Yes | Yes | Yes |
| | Interactive Controller Features | Display Type | | 2.5" Color LED | 2.5" Color LED | 2.5" Color LED |
| Remote Pointing | | | Any Direction/ Any Room | Any Direction/ Any Room | Any Direction/ Any Room | Any Direction/ Any Room |
| Back Lit Buttons | | | Yes | Yes | Yes | Yes |
| Room Temp Display | | | Always | Always | Always | Always |
| Set Temp Display | | | Always | Always | Always | Always |
| Outdoor Temp Display | | | Always | Always | Always | Always |
| Real Time Energy Consumption | | | Efficiency Meter | Efficiency Meter | Efficiency Meter | Efficiency Meter |
| Multi Room AC Control | | | Upto 18 Trane ACs | Upto 18 Trane ACs | Upto 18 Trane ACs | Upto 18 Trane ACs |
| Filters | Bacteria Filter | | Yes | Yes | Yes | Yes |
| | Enzyme Filter | | Yes | Yes | Yes | Yes |
| Weight & Dimensions | IDU Size (Net) | (WxHxD) mm | 1200x300x865 | 1140x270x775 | 920x270x635 | 920x210x635 |
| | ODU Size (Net) | (WxHxD) mm | 900x1170x350 | 946x810x410 | 845x702x363 | 770x555x300 |
| | IDU Weight (Net / Gross) | Kg | 45/53 | 36.1/43.1 | 31/44 | 23/28 |
| | ODU Weight (Net / Gross) | Kg | 91/103 | 73.6/78.2 | 49/52 | 34/36 |
| | Indoor external static pressure (Hi) | Pa | 100 | 80 | 80 | 60 |
| Refrigerant piping | Liquid Pipe | mm(inch) | φ9.52 (3/8") | φ9.52 (3/8") | φ9.52 (3/8") | φ6.35 (1/4") |
| | Gas Pipe | mm(inch) | φ19 (3/4") | φ19 (3/4") | φ15.9 (5/8") | φ12.7 (1/2") |

R410 Range
Series: KS1
 (4 Way Cassette Type AC)



| Specification | Description | Model | TKL48KSTI | TKL36KSTI | TKY24KS2I | TKY18KS2I |
|---------------------|------------------------------|----------------|----------------------|----------------------|---------------------|---------------------|
| Capacity | Cooling | Watts | 14,068 | 11,137 | 7,034 | 5,275 |
| | Cooling | BTU/Hr | 48,000 | 38,000 | 24,000 | 18,000 |
| | Compressor/ Refrigerant | Type | Scroll/ R410 | Scroll/ R410 | Rotary/ R410 | Rotary/ R410 |
| Elec. Rating | Power Supply | Volt/Phase/Hz. | 380V-415V/ 50Hz/ 3Ph | 380V-415V/ 50Hz/ 3Ph | 220-240V~ 50Hz, 1Ph | 220-240V~ 50Hz, 1Ph |
| | Power Input | Watts | 5150 | 3890 | 2384 | 1788 |
| | Running Current | Amps | 8.7 | 7.9 | 10.8 | 8.2 |
| Performance | EER/ COP | W / W | 2.73 | 2.86 | 2.95 | 2.95 |
| | Indoor air flow (Hi/ Mi/ Lo) | CMH | 2000/1700/1480 | 1950/1650/1400 | 1800/1600/1400 | 820/710/600 |
| | Indoor Noise | dB | 48 | 44 | 39 | 33 |
| Features | Air Swing | | Auto | Auto | Auto | Auto |
| | Speed Setting | | 3 Level | 3 Level | 3 Level | 3 Level |
| | Display Type | | Bulb | Bulb | Bulb | Bulb |
| | Memory Backup | | Yes | Yes | Yes | Yes |
| | Sleep mode | | Yes - Eco Mode | Yes - Eco Mode | Yes - Eco Mode | Yes - Eco Mode |
| | Dry Mode | | Yes | Yes | Yes | Yes |
| | Auto Mode | | Yes | Yes | Yes | Yes |
| | Child Lock | | Yes | Yes | Yes | Yes |
| On/Off Timer | | Yes | Yes | Yes | Yes | |
| Filters | Bacteria Filter | | Yes | Yes | Yes | Yes |
| | Enzyme Filter | | Yes | Yes | Yes | Yes |
| Weight & Dimensions | IDU Size (Net) | (WxHxD) mm | 840x840x245 | 840x840x245 | 840x840x245 | 840x840x205 |
| | Panel Size (Net) | (WxHxD) mm | 950x950x55 | 950x950x55 | 950x950x55 | 950x950x55 |
| | ODU Size (Net) | (WxHxD) mm | 900x1170x350 | 946x810x410 | 845x702x363 | 845x702x363 |
| | IDU Weight (Net / Gross) | Kg | 27/30.5 | 24.7/28.4 | 21.9/25.4 | 21.9/25.4 |
| | ODU Weight (Net / Gross) | Kg | 91.3/102.9 | 73.6/78.2 | 45/52.3 | 41.9/45.1 |
| Refrigerant piping | Liquid Pipe | mm(inch) | φ9.52 (3/8") | φ9.52 (3/8") | φ9.52 (3/8") | φ6.35 (1/4") |
| | Gas Pipe | mm(inch) | φ19 (3/4") | φ19 (3/4") | φ15.9 (5/8") | φ12.7 (1/2") |

R410 Range
Series: IN2
 (Interactive Inverter Type AC)



| Specification | Description | Model | TSI22DW | TSI18DW | TSI12DW | TSI22DWXI-H | TSI18DWXI-H | TSI12DWXI-H |
|---------------------|--------------------------|----------------|-------------------------|-------------------------|------------------------|--|--|--|
| Capacity | Cooling(C) Heating(H) | Watts | 7032 (5274-8790) | 5274 (3516-6446) | 3516 (2344-4688) | C: 6741 (3517-7327) / H: 7034 (3224-7913) | C: 4982 (1495-6448) / H: 5275 (1553-6741) | C: 3224 (718-3957) / H: 3664 (821-4688) |
| | Cooling(C) Heating(H) | BTU/Hr | 24,000 (18000-30000) | 18,000 (12000-22000) | 12,000 (8000-16000) | C: 23,000 (12000-25000) / H: 24,000 (11000-27000) | C: 17,000 (5100-22000) / H: 18,000 (5300-23000) | C: 11,000 (2450-13500) / H: 12,500 (2800-16000) |
| | Compressor/ Refrigerant | Type | T Rotary/R410 | Rotary/R410 | Rotary/R410 | T Rotary/R410 | Rotary/R410 | Rotary/R410 |
| Elec. Rating | Power Supply | Volt/Phase/Hz. | 220-240V/ 50Hz/1Ph | 220-240V/ 50Hz/1Ph | 220-240V/ 50Hz/1Ph | 220-240V/ 50Hz/1Ph | 220-240V/ 50Hz/1Ph | 220-240V/ 50Hz/1Ph |
| | Power Input | Watts | 2200 | 1640 | 1090 | C:2100 / H:1950 | C:1550 / H:1380 | C:1000 / H:1010 |
| | Running Current | Amps | 10.0 | 7.5 | 5.0 | C:9.4/ H:8.5 | C:6.9/ H:6.2 | C:4.4/ H:4.5 |
| Performance | EER/ COP | W / W | 3.20 | 3.21 | 3.23 | C: 3.21 / H: 3.61 | C: 3.21 / H: 3.82 | C: 3.22 / H: 3.63 |
| | Indoor air flow | CMH | 1100 | 1100 | 600 | 1200 | 1200 | 630 |
| | Indoor Noise | dB | 40 | 39 | 31 | 39 | 39 | 28 |
| Features | Air Swing | | Auto + 3 Selectable | Auto + 3 Selectable | Auto + 3 Selectable | Auto | Auto | Auto |
| | Speed Setting | | 4 Level | 4 Level | 4 Level | 3 Level | 3 Level | 3 Level |
| | Display Type | | LED | LED | LED | 88 LED | 88 LED | 88 LED |
| | Memory Backup | | Yes | Yes | Yes | Yes | Yes | Yes |
| | Sleep mode | | Yes | Yes | Yes | Yes | Yes | Yes |
| | Dry Mode | | Yes | Yes | Yes | Yes | Yes | Yes |
| | Auto Mode | | Trane Mode | Trane Mode | Trane Mode | Yes | Yes | Yes |
| | Turbo Mode | | Yes | Yes | Yes | Yes | Yes | Yes |
| Connectivity | | Door Lock | Door Lock | Door Lock | Timer | Timer | Yes | |
| Filters | Bacteria Filter | | Yes | Yes | Yes | Yes | Yes | Yes |
| | Active Carbon Filter | | Yes | Yes | Yes | Yes | Yes | Yes |
| | Enzyme Filter | | Yes | Yes | Yes | Yes | Yes | Yes |
| Weight & Dimensions | IDU Size (Net) | (WxHxD) mm | 1030x315x218 | 1030x315x218 | 770x255x188 | 1030x315x218 | 1030x218x315 | 770x255x188 |
| | ODU Size (Net) | (WxHxD) mm | 900x860x315 | 760x590x285 | 780x540x250 | 845x700x320 | 845x700x320 | 780x540x250 |
| | IDU Weight (Net / Gross) | Kg | 12 / 15 | 12/15 | 7 / 9 | 12 / 15 | 12 / 15.5 | 7.5 / 9.5 |
| | ODU Weight (Net / Gross) | Kg | 70 / 74 | 34.5 / 37 | 28 / 30 | 49.5 / 52.5 | 40.5 / 43.5 | 28 / 30 |
| Refrigerant piping | Liquid Pipe | mm(inch) | φ9.52 (3/8") | φ6.35 (1/4") | φ6.35 (1/4") | φ9.52 (3/8") | φ6.35 (1/4") | φ6.35 (1/4") |
| | Gas Pipe | mm(inch) | φ15.9 (5/8") | φ12.7 (1/2") | φ12.7 (1/2") | φ15.9 (5/8") | φ12.7 (1/2") | φ9.52 (3/8") |

R410 Range
Series: IN3
 (Inverter Type Hot & Cold AC)

